

Validation Errors

Form Validation Errors are a way to remind clinicians to complete their forms.

After you have filled in your form and clicked save at the bottom right-hand side of the screen, any missed fields on the form will trigger a Validation Error.

The screenshot shows a form with three sections: Section 3 - Lifting, Section 4 - Walking, and Section 5 - Sitting. Each section contains six radio button options. In Section 4 and Section 5, the entire row of options is enclosed in a red dashed box, indicating that these sections are required. The 'Save' button at the bottom right is highlighted in green, and a 'Feedback about this form?' link is visible below the options.

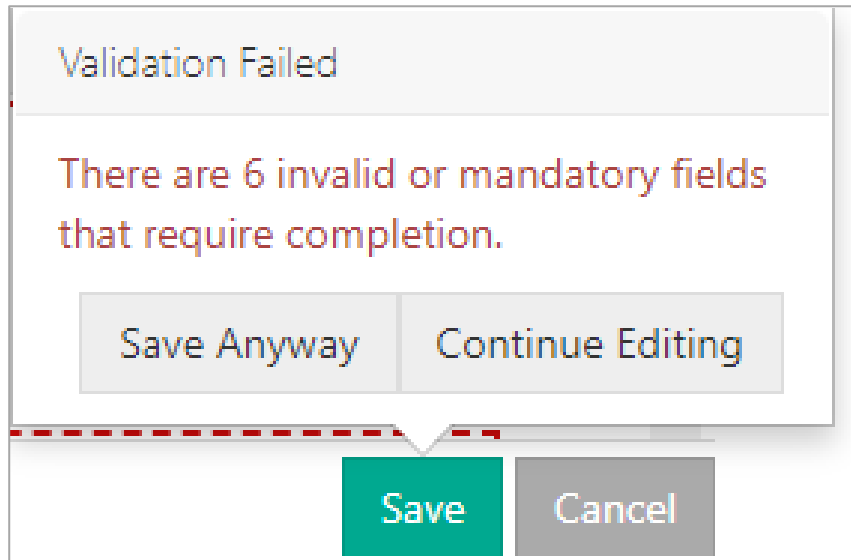
For some systems they will also show a Validation Error List on the upper left-hand side, listing all current required fields on the form.

The following validation errors were found

- 101: Required
- 70736: Required
- 66012: Required
- 65955: Required
- 65961: Required

A box will pop up above the save button if errors are detected alongside the Validation Errors, showing the number of errors that still remain in the form.

If you want to finish the form at another time, you can click 'Save Anyway' and come back to the form later with all the currently filled in fields saved.



Clicking 'Save Anyway' will not mark the form as complete and will stay red on the patient's Clinical Record until completed at another time.

